

# Fact sheet for student exchange programs

Non-EU  
incoming  
students

2025-2026

# General information

**Institution:** Aix-Marseille Université (amU)

**President:** Pr Eric Berton

**Students Mobility Director:** Mrs Marie Tredy

**International Relations Office  
postal address:**

**Aix-Marseille Université  
Direction des Relations  
Internationales**  
Bât. Porte,  
29 Av. Robert Schuman  
13621 Aix-en-Provence  
France

Institutional  
website:



amU's  
presentation video:



Information about  
exchange programs:



## Nomination & application conditions

### University nomination deadlines

**Full year or fall semester:**

1st April 2025

**Spring semester:**

1st October 2025

### Student application deadlines

**Full year or fall semester:**

21st April 2025

**Spring semester:**

21st October 2025

### Application process

#### Step 1 Nomination

Exchange students are nominated through the International Office of their home university. Once their nomination has been confirmed by AMU, online application has to be submitted.

#### Step 2 Online application

Students must complete the online application through AMU's mobility portal. The documents listed on the next page have to be submitted

#### Step 3 Admission

After the application has been examined and accepted, students will receive an admission letter as well as "the welcome package" with all useful information.


# List of documents needed to submit application

- **Resume**
- **Cover Letter**
- **Academic transcript of records**
- **Language proficiency certificate**
- **Learning agreement: *preselected courses at AMU***
- **Reference Letter** for some faculties only (*Sciences, Pharmacy, Public Management, Sciences of the Universe*)




## Required level of language proficiency

**Students may pursue courses in French and/or English. Language level requirement depends on the Faculty:**

 **Students with at least a B1 level in French** may pursue regular French taught courses (B2 level is required at the Faculty of Law and the IAE Aix Graduate School of Management). A B1 level in French is required at the Faculty of Law to pursue courses taught in English.

Evidence of French proficiency is highly recommended (TCF, DELF, DALF).

**For some countries, a language certificate is required for immigration purposes.**

 **Students with at least B2 level in English** may pursue regular courses taught in English. C1 level in English is required at the Faculty of Arts and Humanities and TOEFL iBT 85 or IELTS 6.0 at the IAE Aix Graduate School of Management (with a possibility of individual interview if needed).

Evidence of English proficiency is highly recommended (TOEFL, TOEIC, IELTS).

## Contacts...

**... for university-wide exchange agreements:**

**USA, Canada, Australia, Latin America:**  
dri-exchange-americas-australia@univ-amu.fr

**Asia:**  
dri-exchange-asia@univ-amu.fr

**United Kingdom:**  
dri-exchange-uk@univ-amu.fr

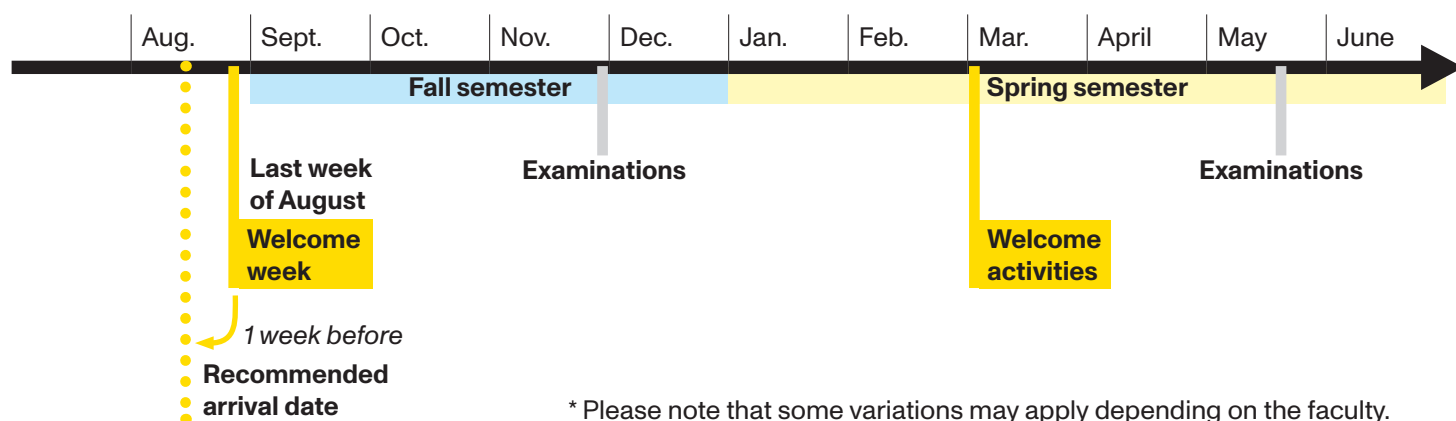
**... for faculty-level exchange agreements:**

You can contact the International Relations Offices within the Schools and Faculties.



# Academic information

## Academic calendar



## Grades and requirements

ECTS grades	20 points scale	Definition
A	16-20	Excellent
B	13-16	Good
C	10-13	Average
D	8-10	Below average
E	6-8	Insufficient
F	0-6	Fail

This reference table is provided for information only, please note that some variations may apply depending on the faculty.

## Course load per semester

<b>24 ECTS credits</b> minimum authorized	<b>30 ECTS credits</b> recommended	<b>34 ECTS credits</b> maximum authorized
--	---------------------------------------	--

In the event of a number of credits lower than 24 ECTS is authorized by the sending university, please contact us so that **we can verify this possibility with the amU faculties directly.**

## Courses open to exchange students

French-taught courses:



English-taught courses:



If you have any questions please contact the International Relations Offices within the Schools and Faculties prior to finalising your course selections :



## Transcript of records

**Transcripts are to be sent to the partner university within 2 months after the exchange semester ends.**

*NB : Some faculties offer re-sit exam sessions in June.*



## SUL (university language center)

### FLE-AMU french classes open to exchange students

Students can follow up to 30 hours of French courses, spread over 10 weeks (each semester). These classes are subject to availability and students may qualify for **4 ECTS**. To do so, they are required to **include «FLE-AMU» courses in their Learning Agreement** and to follow **9 additional hours of online self learning**.



Students from the Faculty of Arts, Letters, Languages and Humanities and students from the IAE Aix Graduate School of Management will receive FLE classes within their faculties.

Online application for students admitted full-time at our French Language center (SUL) is simplified

### Full-time french courses at SUL

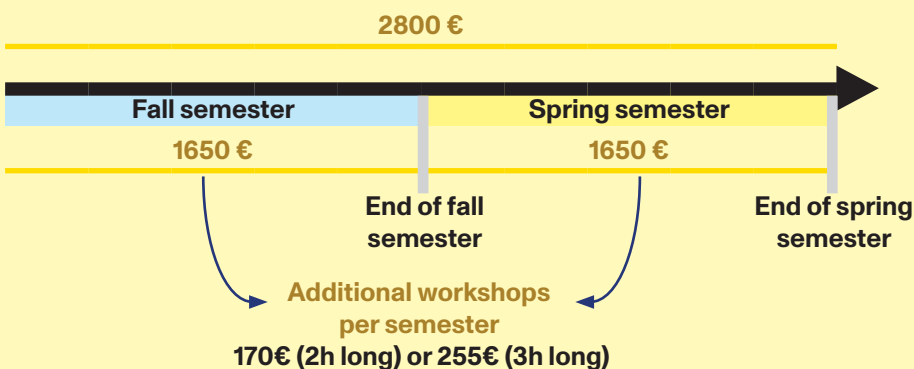


This full-time programme, available for one semester or full academic year, is open to international students. Students can obtain the University Diploma in French Language and Culture (DU de langue et culture française).

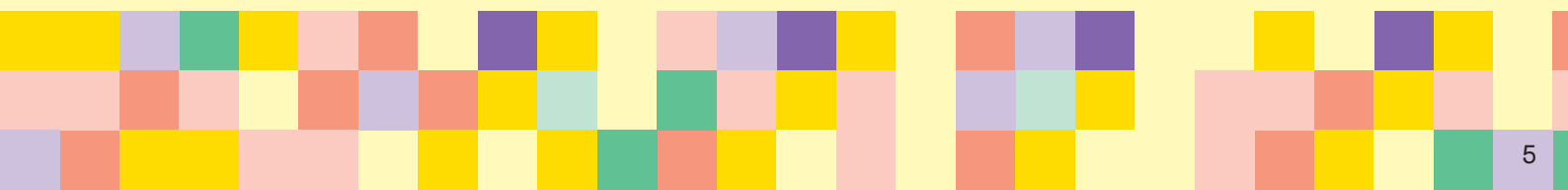
**Level?** From complete beginners to experienced users.

**Language test?** Mandatory online placement test is organised before arrival.

**Credits?** 30 ECTS per semester for 18 hours of classes per week and possibility of taking 2 or 3 hours additional workshops.



Tuition fee waiver or discount for students only from specific programmes\* or exchange students for whom a specific agreement\* has been negotiated with their home university.  
\*Check with your amU coordinator.



# Life in Aix-Marseille

## Disability

Aix-Marseille Université's Mission Handicap welcomes and supports students with physical, sensory or psychological disabilities, dyslexia or long-term disabling health conditions.

It offers appropriate measures for each student throughout his or her university career, particularly in terms of study and exam accommodations.



## Study permits/ visa process

Students must check with the appropriate French Embassy or Consulate in their home country for information about how to apply for a student visa.



## Insurances

**Non EU students** need to register online to the free of charge French Health Plan after arrival in France.

They also have to subscribe to a housing insurance and a personal liability insurance. It is recommended to check the housing insurance contract. Sometimes the liability insurance is already included.



## Transportation

### Arrival by plane

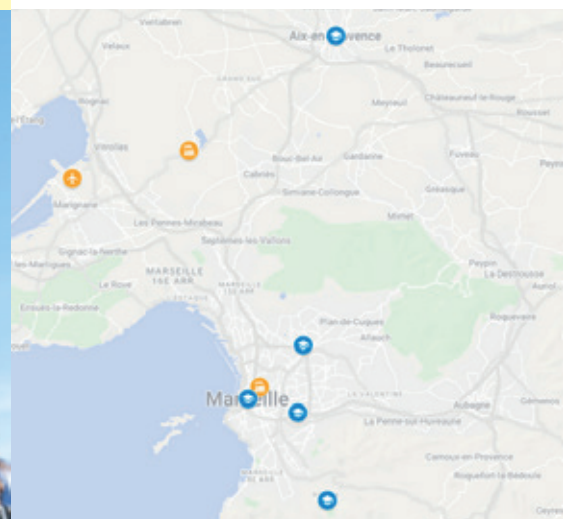
The closest airport to Aix-en-Provence and Marseille is **Marseille-Provence Airport** located approximately 20 miles away from Aix-en-Provence or Marseille.

### Arrival by train

There are two different train stations "gares" associated with **Aix-en-Provence**:

- the **Gare SNCF Aix Centre-Ville** is located downtown Aix.
- **Aix TGV** is the high speed train station located about 15 minutes by bus outside of Aix-en-Provence.

Only one train station is associated to Marseille: **Gare SNCF Marseille St-Charles**



## Cost of living

**Accommodation in Hall of Residence:**  
≈ 255 €/month

**Accommodation off-campus:**  
≈ 500 €/month

**Food expenses:**  
≈ 300 €/month

**Campus cafeteria:**  
≈ 3.30 € per meal

# On-campus housing

Accommodation is guaranteed for exchange students with on campus housing in Aix-en-Provence or in Marseille. Each single room (approximately 10 m<sup>2</sup>) is furnished with a bed, a desk, a chair, a fridge, a washbasin, a shower and toilet. Shared kitchen facilities can be found in each building. To book their room, students will be required to:

## Before their arrival

- Fill in the MoveOn and MesServicesEtudiants forms
- Confirm their booking through a 100€ down payment
- Upload their proof of identity and housing insurance including personal liability and VISALE when needed
- Sign and upload their housing contract



## Upon their arrival

- Pay their room for the whole semester at the frontdesk of the residence
- Pay a security deposit (refunded at check out)

**NB:** Cash payment is not accepted. Students should confirm with their bank that they can make international payments with their card.

# Surroundings

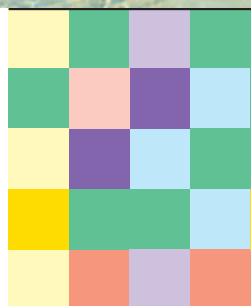


**Aix-en-Provence:**  
A vibrant historic City and arts center



## Marseille:

A major sea harbor near the French Riviera, at the foot of the Parc national des Calanques



# Student resources & services

## Buddy system

International students can take part in the **Buddy program** and have a student tutor. A local student (a Buddy) will help integration at the university



# Welcome desk

This event offers international students the **opportunity to meet our different local partners and get valuable assistance in completing all the administrative procedures they need to deal with:**



Visa



Insurances



Health-related procedures



Bank account

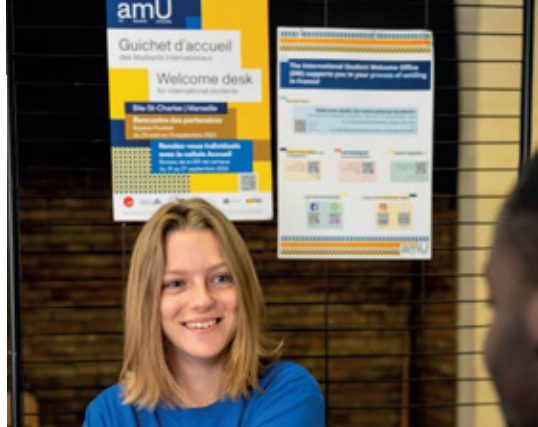


Housing and accommodation



Student membership transport passes

It will also help them to get in touch with the different internal or local services of AMU.



## Integration activities

During the first semester, students have the opportunity to register for cultural and social activities and be immersed in their future campus and local life during the intergration week. **It is highly recommended to arrive one week before the beginning of the fall semester and take part in the International Welcome Week.**

In the second semester, new exchange students can register for the Integration Day to get to know each other and discover their new environment.



Conception graphique : Dircom amU | Décembre 2024 | FR - Crédit photos : amU | Eléa Rapiot